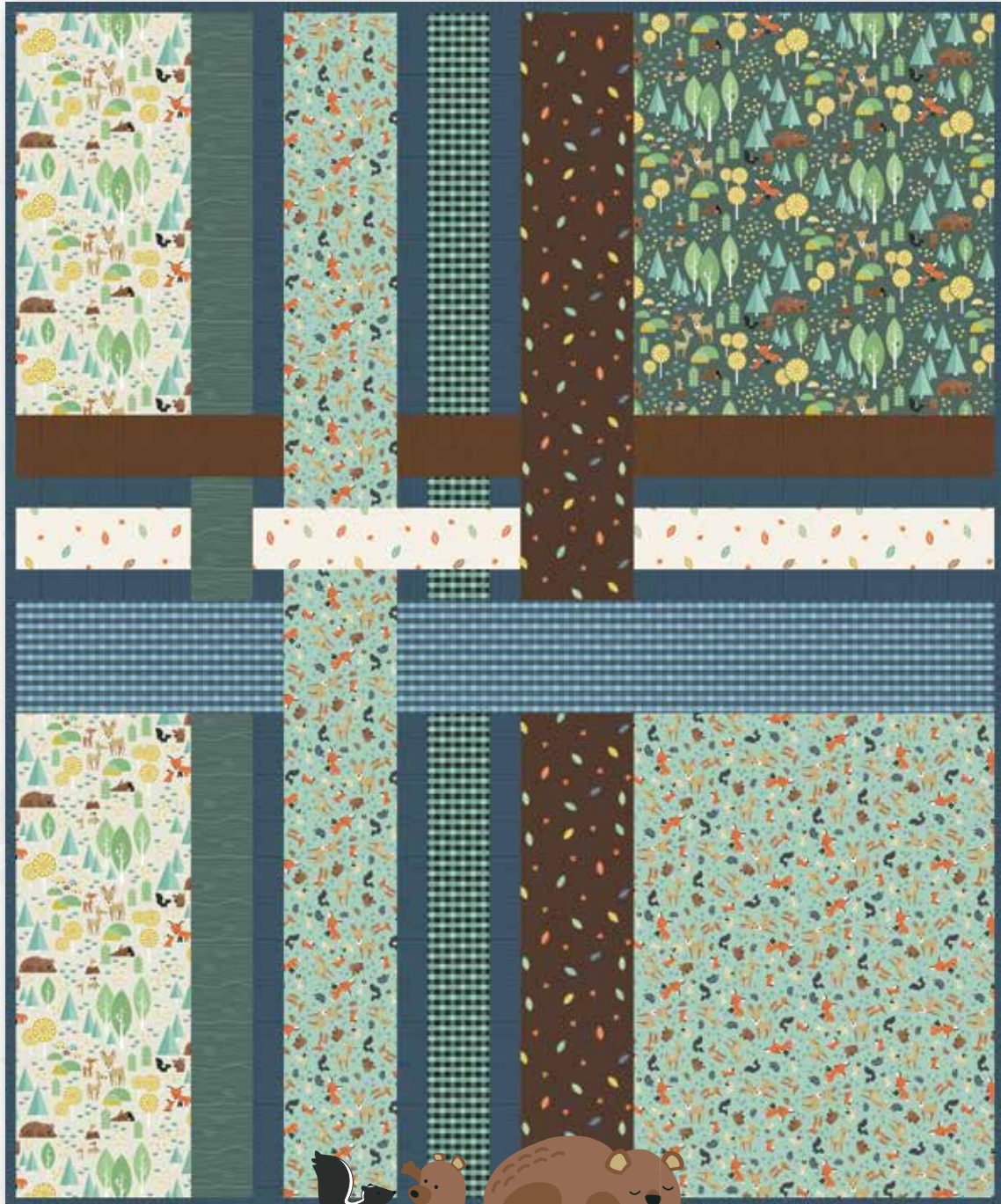


FOREST FRIENDS

Riley Blake  
DESIGNS



  
**WOODLAND**  
FLANNEL BY BEN BYRD

# FOREST FRIENDS

## FINISHED QUILT SIZE 47½" x 57½"

Measurements include ¼" seam allowance.

Sew with right sides together unless otherwise stated.

Please check our website [www.rileyblakedesigns.com/pattern-updates](http://www.rileyblakedesigns.com/pattern-updates) for any revisions before starting this project.

This pattern requires a basic knowledge of quilting technique and terminology. The quilt and block diagrams portrayed are virtual images. The layout and look of your project may differ when using actual fabric.

## FABRIC REQUIREMENTS

⅝ yard Green Main (F10630 Green)

¾ yard Parchment Main (F10630 Parchment)

⅞ yard Mint Toss (F10631 Mint)

⅝ yard Brown Leaf (F10632 Brown)

⅝ yard Parchment Leaf (F10632 Parchment)

⅝ yard Brown Wood Grain (F10633 Brown)

¼ Yard Green Wood Grain (F10633 Green)

1 yard Navy Wood Grain (F10633 Navy)\*

¼ yard Blue Plaid (F10634 Blue)

¼ yard Mint Plaid (F10634 Mint)

\* Includes binding

## CUTTING REQUIREMENTS

Please read instructions first before cutting.

WOF - width of fabric.

Label pieces as they are cut.

### Green Main

Cut 1 strip 20" x WOF.

Sub-cut from strip:

1 - 18" x 20" panel (A)

### Parchment Main

Cut 1 strip 24" x WOF.

Sub-cut from strip:

1 - 9" x 24" panel (B)

1 - 9" x 20" panel (C)

### Mint Toss

Cut 1 strip 18" x WOF.

Sub-cut from strip:

1 - 18" x 24" panel (D)

Cut 2 strips 6" x WOF.

Sub-cut from strips:

1 - 6" x 31" rectangle (E)

1 - 6" x 24½" rectangle (F)

### Brown Leaf

Cut 2 strips 6" x WOF.

Sub-cut from strips:

1 - 6" x 24½" rectangle (G)

1 - 6" x 24" rectangle (H)

1 - 3½" x 6" rectangle (I)

1 - 2" x 6" rectangle (J)

### Parchment Leaf

Cut 1 strip 3½" x WOF.

Sub-cut from strip:

1 - 3½" x 18" rectangle (K)

1 - 3½" x 13½" rectangle (L)

1 - 3½" x 9" rectangle (M)

### Brown Wood Grain

Cut 1 strip 3½" x WOF.

Sub-cut from strip:

1 - 3½" x 18" rectangle (N)

1 - 3½" x 13½" rectangle (O)

1 - 3½" x 6½" rectangle (P)

### Green Wood Grain

Cut 2 strips 3½" x WOF.

Sub-cut from strips:

1 - 3½" x 24" rectangle (Q)

1 - 3½" x 20" rectangle (R)

1 - 3½" square (S)

2 - 2" x 3½" rectangles (T)

### Navy Wood Grain

Cut 6 strips 2¼" x WOF for Binding.

Cut 6 strips 2" x WOF.

Sub-cut from strips:

3 - 2" x 24" rectangles (U)

3 - 2" x 20" rectangles (V)

2 - 2" x 18" rectangles (W)

2 - 2" x 9" rectangles (X)

6 - 2" squares (Y)



# FOREST FRIENDS

## Blue Plaid

Cut 1 strip 6" x WOF.

Sub-cut from strip:

1 - 6" x 29½" rectangle (Z)

1 - 6" x 13½" rectangle (AA)

## Mint Plaid

Cut 2 strips 3½" x WOF.

Sub-cut from strips:

1 - 3½" x 24" rectangle (AB)

1 - 3½" x 20" rectangle (AC)

2 - 2" x 3½" rectangles (AD)

## QUILT ASSEMBLY

Refer to the quilt photo for the placement of prints.

Refer to the quilt layout diagram when constructing the quilt sections. Press seam allowances open.

### Section 1

Sew together, in order, the C panel and the R and 1 V rectangle to make Unit 1 (13½" x 20").

Sew together 1 X and T rectangle and 1 Y square. Sew to the bottom of the O rectangle to make Unit 2 (13½" x 5").

Sew Unit 1 to the top of Unit 2. Sew to the left edge of the F rectangle to complete Section 1 (19" x 24½").

### Section 2

Sew a V rectangle to each side of the AC rectangle to make Unit 3 (6½" x 20").

Sew a Y square to each side of 1 AD rectangle. Sew to the bottom of the P rectangle to make Unit 4 (6½" x 5").

Sew Unit 3 to the top of Unit 4. Sew to the left edge of the G rectangle to complete Section 2 (12" x 24½").

### Section 3

Sew together the A panel and the N and 1 W rectangle to complete Section 3 (18" x 24½").

### Section 4

Sew together the M rectangle, S square and L, I and K rectangles to complete Section 4 (48" x 3½").

### Section 5

Sew together 1 X and T rectangle and 1 Y square. Sew to the top of the AA rectangle to make Unit 5 (13½" x 7½").

Sew together the B panel and the Q and 1 U rectangle to make Unit 6 (13½" x 24").

Sew Unit 5 to the top of Unit 6. Sew to the left edge of the E rectangle to complete Section 5 (19" x 31").

### Section 6

Sew together, in order, 1 Y square, 1 AD rectangle, 1 Y square, the J and 1 W rectangle. Sew to the top of the Z rectangle to make Unit 7 (29½" x 7½").

Sew together 1 U, AB, 1 U, and H rectangles and the D panel to make Unit 8 (29½" x 24").

Sew Unit 7 to the top of Unit 8 to complete Section 6 (29½" x 31").

### Quilt Top

Sew Sections 1, 2 and 3 together into a row.

Sew Sections 5 and 6 together into a row.

Sew Section 4 between the 2 rows to complete the Quilt Top (48" x 58").

Finish quilt by layering the quilt top, batting, and back. Bind with the Navy Wood Grain strips. Have fun with your colors and enjoy the journey of making your quilt.

# FOREST FRIENDS

## Quilt Layout

