

The new addi plug-and-knit system

addi  **click**

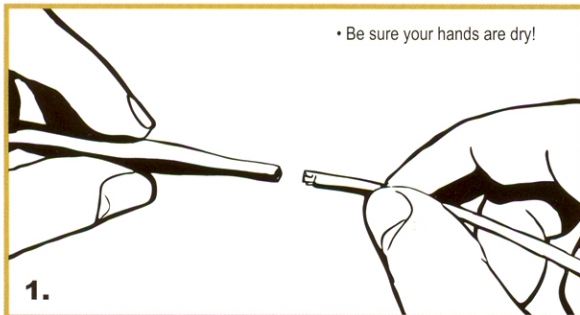
Made in Germany

by

skacel

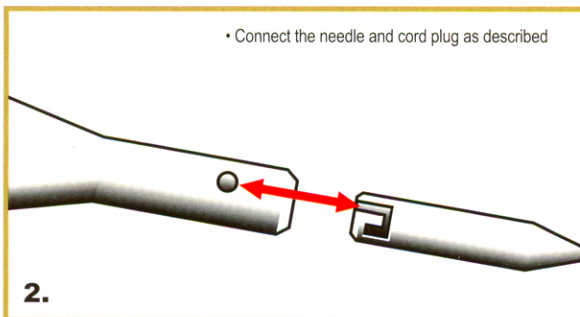
MANUAL • INSTRUCTIONS

• Be sure your hands are dry!

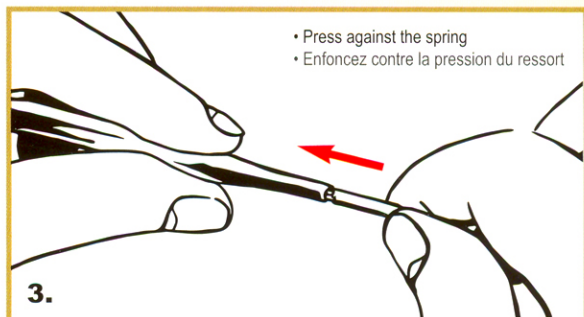


Step 1: Choose the desired pair of tips and a blue cord. Ensure that your hands are dry when connecting needle and cord so that they do not slip.

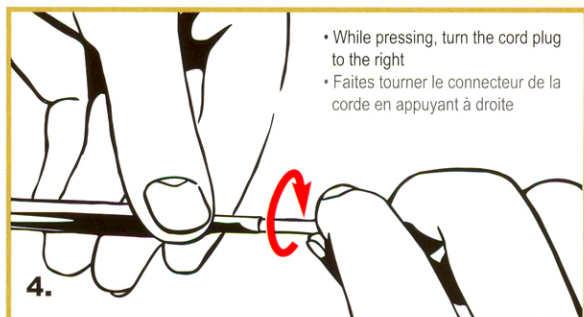
• Connect the needle and cord plug as described



Step 2: The open recess in the cord plug and the inset point at the end of the needle must line up exactly (picture 2) for the needle to lock in easily.



Step 3: Insert the cord plug (picture 3) $\frac{1}{8}$ of depth into the needle thus compressing the spring in the needle; this may require a bit more strength the first time, you are using your clicks.



Step 4: While pressing, turn the cord plug roughly $\frac{1}{16}$ of a turn to the right until it locks into position, (picture 4). So cord and needle fit together perfectly.

Step 5: To open the connection just push the cord plug a little bit into the needle and turn it to the left.

More uses

You can combine two cords with the coupling (located horizontally in the case). You can also "park" a piece of knitting on a cord if you click the cord plugs into the coupling on the left and on the right. That way you can use the exact same pair of needles for another piece of knitting at the same time.

addi 

MADE IN GERMANY

www.addinadeln.de