

Provence Flannel

Fabric by Faye Burgos
Quilt Design by Teri Lucas

REVISED 3 APRIL 2012



78" x 78"

Faye Burgos' warm, inviting palette and Jacoben inspiration combine to create this cozy quilt, perfect for year-round enjoyment.

YARDAGE & CUTTING GUIDE

Fabric Description

A 3482-0211	red floral
B 3842-0242	cream floral
C 3481-0211	red stripe
D 3845-0242	cream tone on tone
E 3844-0242	cream small scale floral
F 3844-0213	brown small scale floral
G 3843-0211	cream with red floral spray
H 3483-0216	green with cream floral spray
I 3846-0211	red with small flower
J 3846-0216	deeper green with small flower
K 3846-0242	lighter green with small flower
	Your favorite fabric

Yardage

¼ yard
5/8 yard
2 1/2 yards
3/4 yard
¼ yard
3/4 yard
5/8 yard
3/4 yard
7/8 yard*
3/4 yard
2-1/8 yards
5 yards

Cutting Guide

(4) 6 ½ inch squares
(9) 6 ½ inch squares
(4) 6 ½ x length of fabric strips
(240) 1 7/8 inch squares
(60) 1 7/8 inch squares
(240) 1 7/8 inch squares
(24) 3 ½ x 6 ½ inch strips
(28) 3 ½ x 6 ½ inch strips
(48) 4 ½ inch squares
(52) 3 ½ inch squares
(4) 2 ½ x length of fabric strips

Placement

Block A
Blocks B, C, D
Border 2
Block D
Block D
Block D
Block B
Block C
Block D
Blocks A, B, C
Border 1

*add 2/3 yard for (9) 2 1/4 inch binding strips

Note: All seams are stitched at 1/4 inch.

Blocks A, B & C – Puss in Boots make 13 total blocks—this block has three different color ways, Rows 2 and 4 (Block A), Rows 1 and 5 (Block B) & Row 3 (Block C). Refer to block photos for color placement and photo of quilt for block placement.

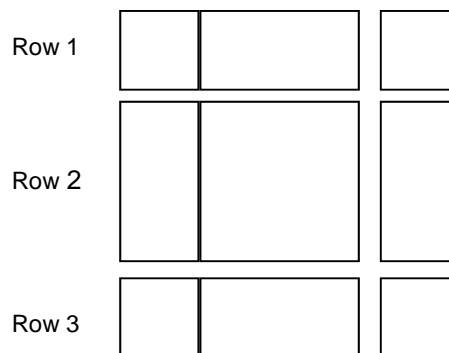
Piecing Puss in Boots Blocks—See diagram & photos below

—Rows 1 & 3—Stitch a 3 ½ inch square to the short side of an H 3 ½ x 6 ½ inch strip.
Stitch a 3 ½ inch square to other side of 3 1/2 x 6 1/2 inch strip. Press seams toward 3-1/2 by 6-1/2 inch strip.

—Row 2—Stitch the long side of an 3-½ x 6 ½ inch strip to the 6-½ inch square.
Stitch 2nd strip to other side of square. Press towards 3-1/2 x 6-1/2 inch strips

—Stitch row 1 to row 2, press towards center 6 1/2 inch square.

—Stitch row 3 to row 2, press towards center 6 1/2 inch square.



Block A uses fabrics J, H & A
Make 4



Block B uses fabrics J, G & B
Make 6

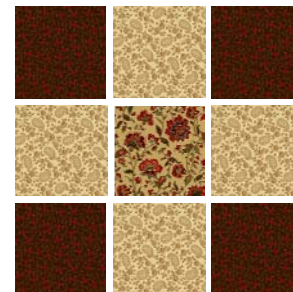
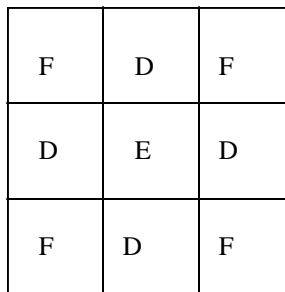


Block C uses fabrics J, H & B
Make 3

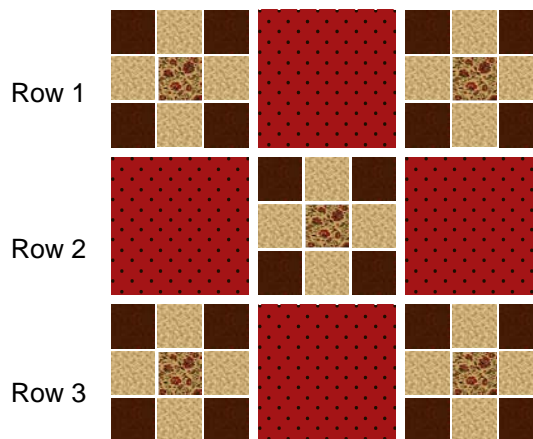


Block D – Double 9 Patch make 12 blocks: Fabrics needed D, E, F & I

Stitch together the smaller 9 patch blocks first.
 Row 1—F, D, F Press towards fabric F (Brown Floral)
 Row 2—D, E, D Press towards fabric E (Cream Floral)
 Row 3—F, D, F Press towards fabric F (Brown Floral)
 Make 5 per block, 60 total.



TIP: as you're piecing these smaller pieces a scrap fabric (leader) will help keep the pieces from going into the bobbin area. This piece can be used through out the piecing process.



Piece the Double 9 Patch Blocks stitch together 9 Patches with Fabric I (Red with Flowers) ▶

Row 1—9 Patch, Fabric I, 9 Patch —Press towards Red with Flowers
 Row 2—Fabric I, 9 Patch, Fabric I —Press towards Red with Flowers
 Row 3—9 Patch, Fabric I, 9 Patch —Press towards Red with Flowers

Arrange the blocks according to the photo layout below. Following diagram for block placement, stitch each row, pressing seams towards Puss in Boots Blocks. Once each Row is stitch & pressed, stitch the rows together. Due to the amount of seams it may be advisable to press the seams open.



Row 1: Blocks: B, D, B, D, B

Row 2: Blocks D, A, D, A, D

Row 3: Blocks: C, D, C, D, C

Row 4: Blocks D, A, D, A, D

Row 5: Blocks: B, D, B, D, B

Add the inner border. On the back of the quilt top mark 1/4 inch from each corner. Make sure the strips extend 3 inches beyond the quilt top. Stitch each side of the border strips on starting and stopping at the quarter inch mark. Press toward the border.

With the strips over lapping use a ruler and chalk pencil to draw a line from the corner of the quilt to the edge of the top strip. (Fig. 1) Fold the strips together so that the outer and inner edges are lined up. Have the drawn line (Fig. 2) on top, pin and stitch. Repeat on each corner.

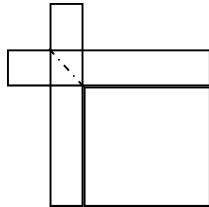


Fig. 1

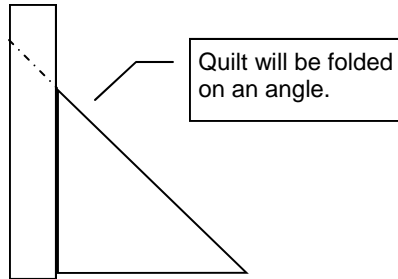


Fig. 2



To add the second border, repeat the above directions for adding the first border.

Feature of Border Print: the 2nd border looks as though two borders have been added due the way the stripe was printed!

Quilting suggestion: Baste the quilt using your favorite batting. Stitching in the ditch with red thread will highlight the beauty and warm tones of this quilt. Bind & enjoy!

